

---

December 20, 2023

To Whom It May Concern,

Settler Wind, LLC, a subsidiary of The AES Corporation (“AES”) is applying for a Wyoming Industrial Development Information and Siting Act Section 109 Permit and a Converse County Wind Energy Conversion System Use Permit to build and operate a commercial Wind Energy Conversion System known as Settler Wind Farm (the Project)

AES is a US-based, global energy company accelerating the future of energy. Together with our many stakeholders, we are improving lives by delivering greener and smarter energy solutions. Our diverse workforce is committed to continuous innovation and operational excellence while partnering with our customers on their strategic energy transitions and continuing to meet their energy needs today.

AES’ Settler Wind Farm plans to install 150 megawatts (MW) of interconnection capacity, consisting of up to 40 wind turbines depending on final turbine technology selection. In addition to the wind turbine generators, the Project will include a substation and switchyard, a High-Voltage Generation Transmission Line, Project roads, medium voltage collection systems, an operations and maintenance building, permanent meteorological towers and other auxiliary Project components. The Project will be permitted, developed, constructed, owned, and operated by Settler Wind, LLC.

The Project will be in southwest Converse County, approximately 13 miles south of Glenrock, Wyoming. A Project fact sheet and Project location map are enclosed. The Project is located on approximately 13,000 acres of private land located just west of the operating Pioneer Wind Farm. Final Project design is still underway, and the locations of the proposed facilities are not final. Although the Project site control consists of thousands of acres, the actual footprint of the project is expected to be well below 5% of the total project area.

The main access to the Project site will be via County Road (CR) 18 (also known as Mormon Canyon Road), approximately 13 miles south of Interstate 25 (I-25). The Project will use Duck Creek Road, west of CR-18, and a combination of existing and proposed private access roads to access turbines within the Project site boundary. New turbine access roads will be constructed to connect the turbine sites to the existing and proposed road network described above. The transportation routes for construction materials are anticipated to use the same network of roads, but this has not been finalized at this time.

A meeting was held with the Wyoming Department of Environmental Quality Industrial Siting Division (ISD) on September 21, 2023. The ISD staff determined that the Project was within the jurisdiction of the Industrial Siting Council since the Project is a commercial wind energy facility consisting of twenty (20) or more turbines (W.S. § 35-12-102).

Permitting is currently underway for the Project. The submittal of a Converse County Wind Energy Conversion System Use Permit Application is planned for February 2024, with a public hearing to be held tentatively in May 2024. The submittal of an Industrial Siting Application to Wyoming DEQ is planned for March 2024, with a public hearing tentatively planned for June 2024. Construction commencement is targeted in August 2025 to support commercial operations in December 2026.

Settler Wind, LLC is in the process of conducting meetings and presentations with municipalities, counties, state agencies and other stakeholders close to the area of influence of the Project. The meetings will be an opportunity to discuss the potential environmental, social, and economic considerations for the Project and

---

identify mitigation recommendations and solutions to incorporate into the planning and design of the Project. The complete economic benefits and anticipated impacts from the Project are still being determined and analyzed and will be fully vetted through the permitting process.

### **Invitation to Participate**

Settler Wind invites you to express your agency's comments and provide feedback so that issues may be considered and addressed directly with your agency, as well as incorporated into the Industrial Siting Permit Application and construction planning process. You may provide input by sending an email to [settlerwind@aes.com](mailto:settlerwind@aes.com), or by mailing your comments to us at:

Daniel Sierra Kieswetter  
AES Clean Energy  
282 Century Pl, #2000  
Louisville, CO 80027  
[www.aes.com](http://www.aes.com)

Please be sure to include your name and contact information with your comments so that we may follow up with you effectively.

A local open house event with members of the Project team is scheduled in Glenrock as shown below:

Tuesday January 23, 2024 3:00 p.m. – 6:00 p.m. Glenrock Library Meeting Hall 506 S 4th Street Glenrock, WY 82637
--

Refreshments will be served. We look forward to hearing from you and welcome your input.

Sincerely,

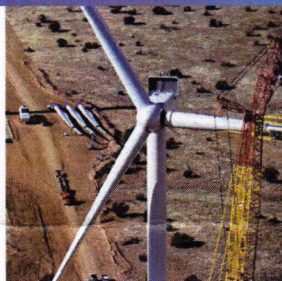
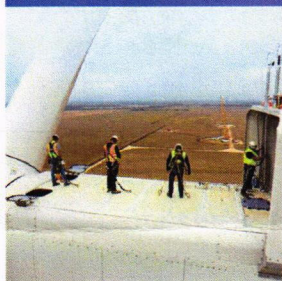


Daniel Sierra Kieswetter  
Manager, Wind Development  
Settler Wind, LLC

Enclosures:    1) Project Fact Sheet  
                     2) Project Location Map



# Settler wind farm



AES' proposed Settler wind farm project, to be located about 20 miles southeast of Casper, Wyoming, will incorporate the most advanced wind generation technology. The 150-megawatt (MW) project will diversify the state's energy resources while delivering reliable and affordable renewable energy to customers in Wyoming.

## Project overview



**150 MW**

total wind generation capacity



Enough renewable energy to power the equivalent of **44,000 Wyoming homes**



**200-plus**  
construction jobs

## Expected project timeline

Development Period: **2018-2025**

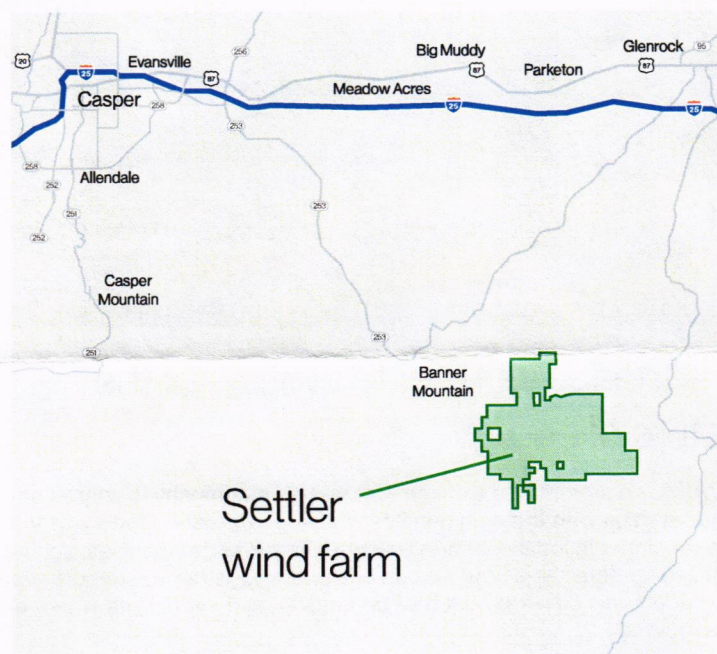
Construction: **2025-2026**

Commercial Operations: **Q4 2026**

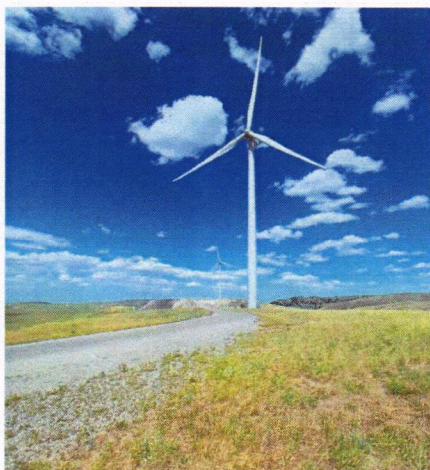
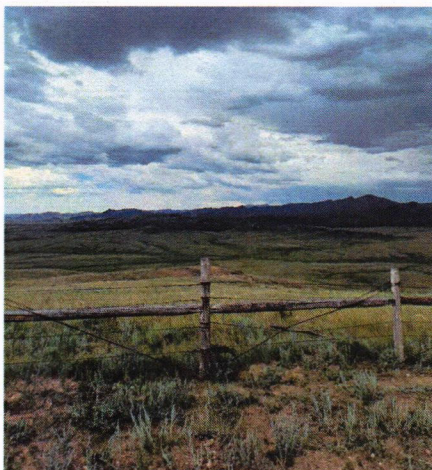
## Project details

In addition to wind turbines, the proposed on-site components for the Settler wind project include an operations and maintenance building, a project substation, permanent meteorological towers, a high-voltage project transmission line to interconnect to an existing substation in the area, access roads and underground and overhead 34kV collection lines to move the generated electricity from the turbines to the project's substation.

The site, subject to FAA requirements, will also feature a radar-activated lighting system that enables federally required turbine lights to turn on only when low flying aircraft are in the area to preserve the area's dark sky characteristics. The wind farm will interconnect to the power grid via PacifiCorp's Amasa Substation using existing transmission infrastructure at AES' neighboring wind farm.



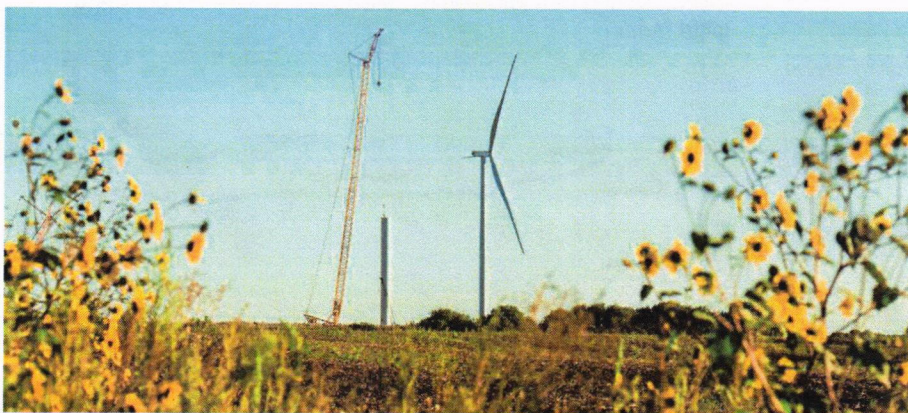




## Responsible clean energy development

The Settler wind project will be developed in close coordination with the U.S. Fish and Wildlife Service's and Wyoming Game and Fish Department's wind energy wildlife guidelines to identify, avoid, minimize and compensate for potential adverse impacts to wildlife resources thought to be at risk from wind energy development.

The project will incorporate sustainable clean energy development practices that respect and protect the local environment. The project represents non-permanent development and low-impact construction that ensures the land can be sensitively restored to pre-project conditions at the end of the project's life.



## Partnering with communities for the future of energy

At AES, we understand that our success as a company is only as strong as our partnerships with the communities where we operate. That's why we partner with stakeholders in local communities, customers, state agencies, schools, elected officials to determine how we can best work together to support sustainable social and economic development that benefits local communities where our projects are located.

For more information, email us at:  
[settlerwind@aes.com](mailto:settlerwind@aes.com)

[www.aes.com](http://www.aes.com)

## Clean energy benefits to local communities

The Settler wind facility is expected to generate long-term economic benefits for Converse County, the state of Wyoming, local residents and communities over the life of the project. These benefits include:

- More than \$52 million in new, long-term tax revenue to the state, local counties, towns and school districts over the life of the project without burdening local infrastructure or services (this estimate includes all local and state property, sales, and wind energy production taxes)
- Job creation and local economic stimulus during construction
- Income diversification for local ranchers and landowners while preserving agricultural and ranching activities for future generations

## About AES

The AES Corporation (NYSE: AES) is a Fortune 500 global energy company accelerating the future of energy. Together with our many stakeholders, we're improving lives by delivering the greener, smarter energy solutions the world needs.





